



END PLANT EFFLUENT LINE
36" PLE STA 22+04
N: 635277.3233
E: 1924001.7034

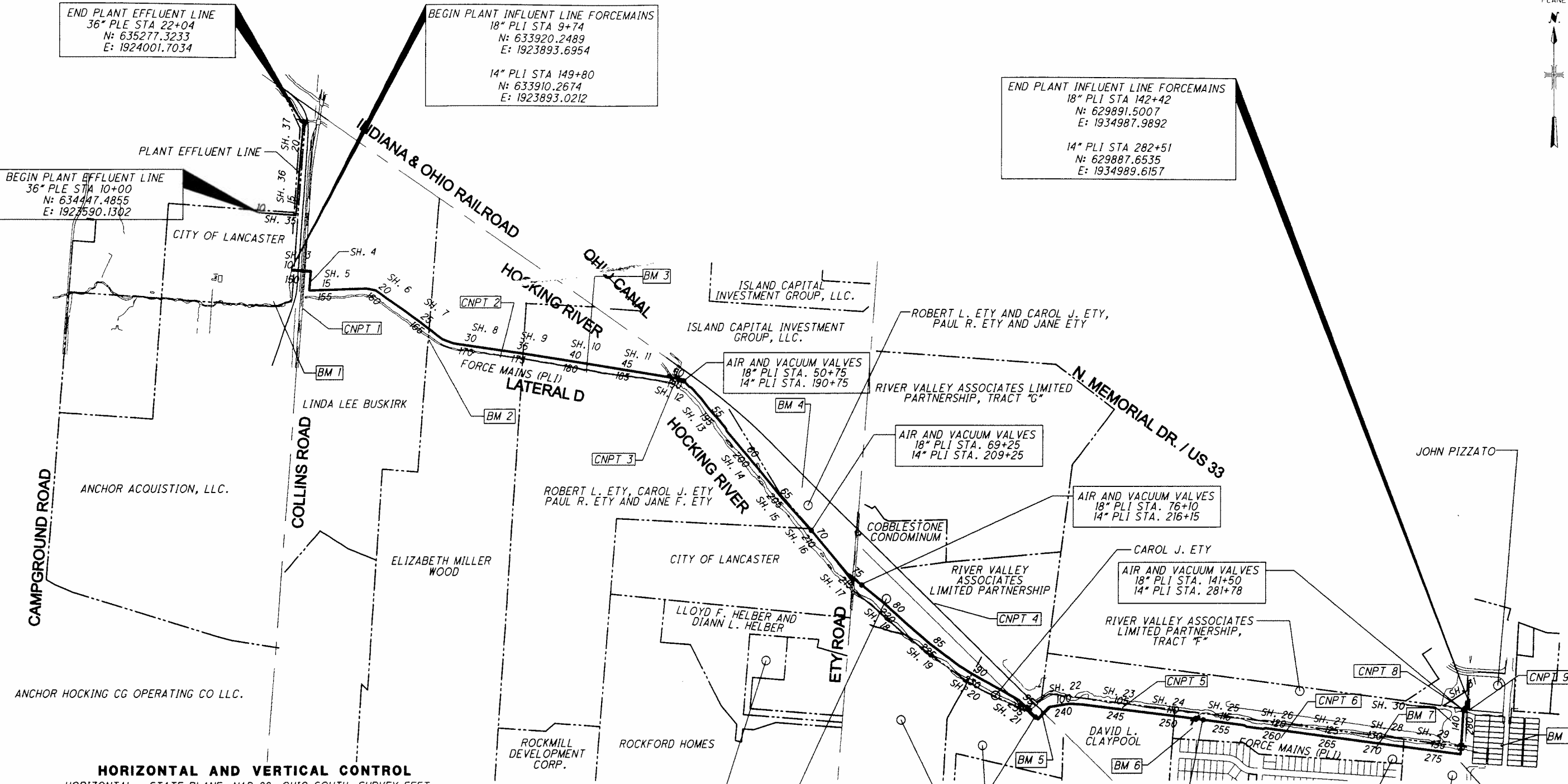
BEGIN PLANT INFLUENT LINE FORCEMAINS
18" PLI STA 9+74
N: 633920.2489
E: 1923893.6954

14" PLI STA 149+80
N: 633910.2674
E: 1923893.0212

END PLANT INFLUENT LINE FORCEMAINS
18" PLI STA 142+42
N: 629891.5007
E: 1934987.9892

14" PLI STA 282+51
N: 629887.6535
E: 1934989.6157

BEGIN PLANT EFFLUENT LINE
36" PLE STA 10+00
N: 634447.4855
E: 1927590.1302



HORIZONTAL AND VERTICAL CONTROL

HORIZONTAL - STATE PLANE, NAD 88, OHIO SOUTH, SURVEY FEET
VERTICAL - NAVD 88, SURVEY FEET

CONTROL POINTS		BENCHMARKS	
CONTROL POINT 1 PK NAIL IN EP N: 633557.2534 E: 1924002.0645	CONTROL POINT 6 IRON PIN SET N: 629564.7608 E: 1933234.0402	BENCHMARK 1 IRON PIN FOUND N: 633624.5508 E: 1923727.3904 ELEV: 831.08	BENCHMARK 5 IRON PIN SET N: 629838.6988 E: 1930988.1977 ELEV: 827.22
CONTROL POINT 2 IRON PIN SET N: 633102.1619 E: 1925872.0802	CONTROL POINT 7 IRON PIN SET N: 629339.2886 E: 1934913.0252	BENCHMARK 2 IRON PIN SET N: 633266.3620 E: 1925193.8756 ELEV: 827.10	BENCHMARK 6 IRON PIN SET N: 629659.4375 E: 1932407.6315 ELEV: 822.28
CONTROL POINT 3 IRON PIN SET N: 632830.7730 E: 1927509.3769	CONTROL POINT 8 NAIL SET N: 629835.8949 E: 1934924.6746	BENCHMARK 3 IRON PIN SET N: 632961.5005 E: 1926682.0217 ELEV: 826.77	BENCHMARK 7 IRON PIN SET N: 629469.3778 E: 1934121.9601 ELEV: 815.58
CONTROL POINT 4 IRON PIN SET N: 630816.5594 E: 1929988.3887	CONTROL POINT 9 NAIL SET N: 629830.9499 E: 1934996.1501	BENCHMARK 4 IRON PIN SET N: 631892.3834 E: 1928741.4443 ELEV: 834.66	BENCHMARK 8 ODOT FAI 33 N: 629495.0800 E: 1935286.6100 ELEV: 824.25
CONTROL POINT 5 IRON PIN SET N: 629850.1023 E: 1931750.0736			

AIR AND VACUUM VALVES
18" PLI STA. 96+75
14" PLI STA. 236+75

AIR AND VACUUM VALVES
18" PLI STA. 113+06
14" PLI STA. 253+25

ROBERT L. ETY AND CAROL J. ETY,
PAUL R. ETY AND JANE ETY

LANCASTER CAMP MEETING AND
ASSEMBLY ASSOCIATES, INC.