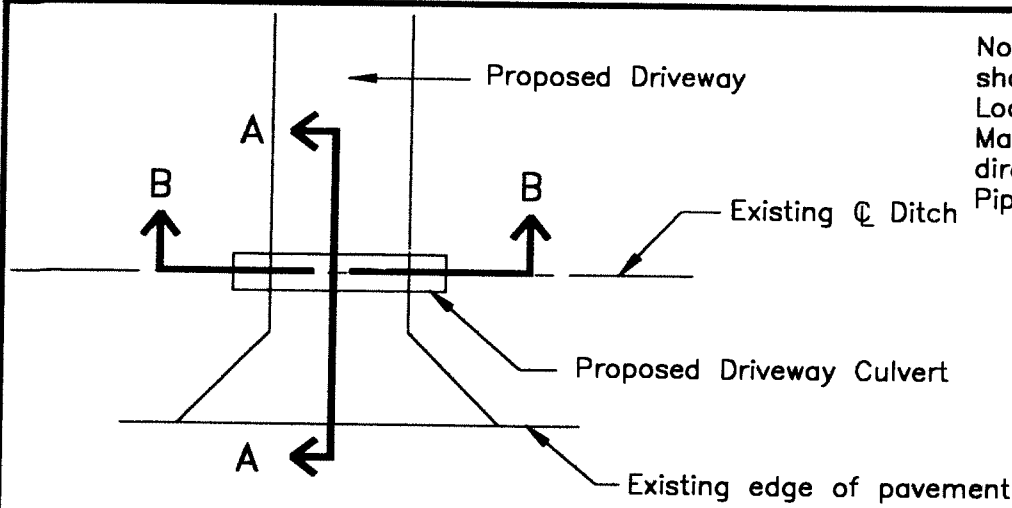
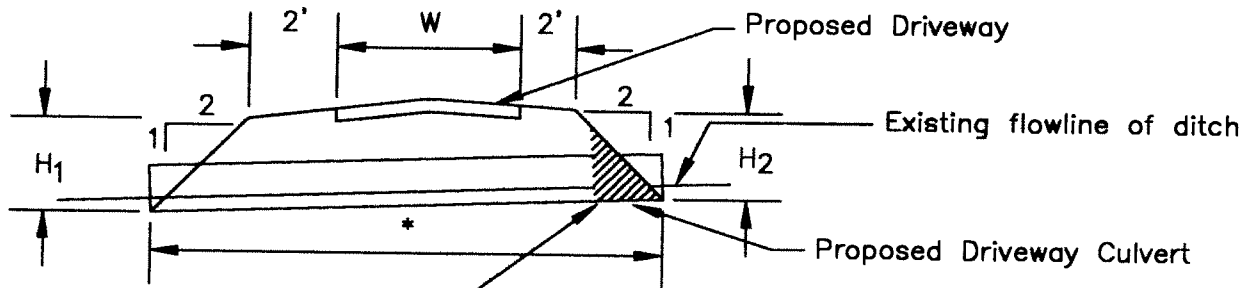


Note: Diameter of Culvert shall be determined per ODOT Location and Design Drainage Manual and as approved and directed by the Engineer. Pipe material shall be RCP.



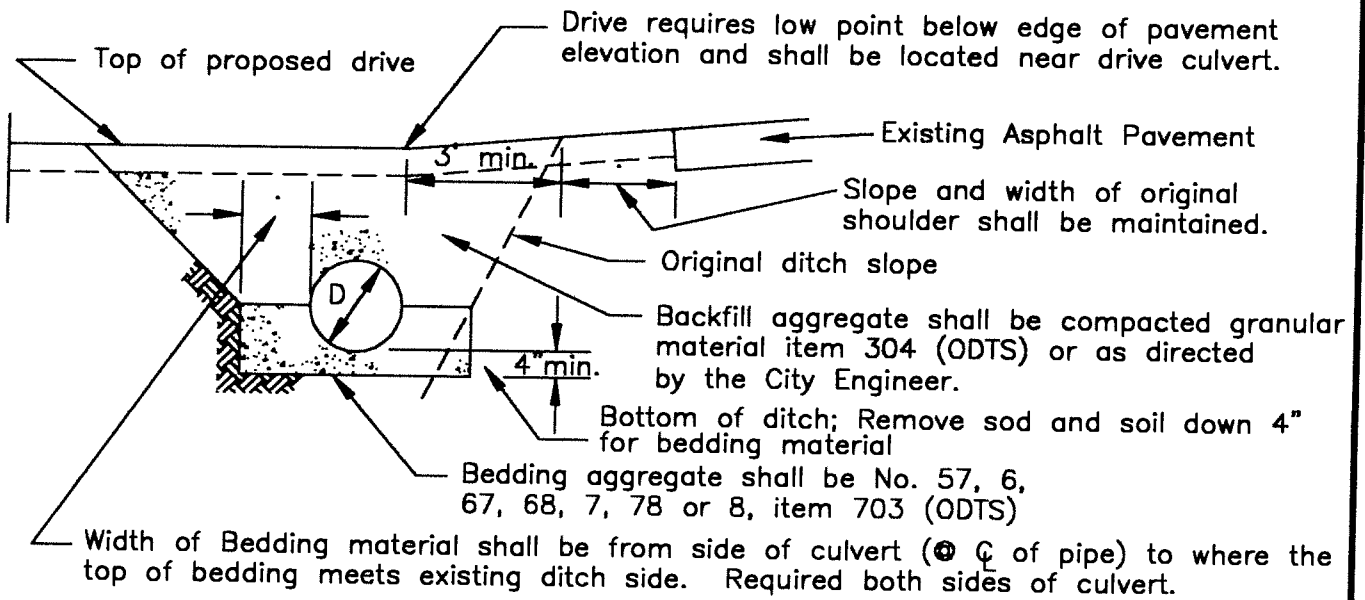
PLAN VIEW

* $L(\text{min.}) = W + 4 + 2H_1 + 2H_2$



SECTION B-B

First 5' of Bedding and Backfill, inlet end, shall be compacted earth, not granular material. This is to avoid washout of bedding during heavy flow



SECTION A-A

APPROVED 3-17-99

Kerry Houston
CITY ENGINEER

REVISED:

DITCH
CULVERT
DETAIL

CITY OF LANCASTER, OHIO
DEPARTMENT OF ENGINEERING

STANDARD
CONSTRUCTION DRAWING

DWG. BY: *JMT*
CHK'D BY: *RM*

FILE NUMBER
D-13 SHEET
1 OF 1