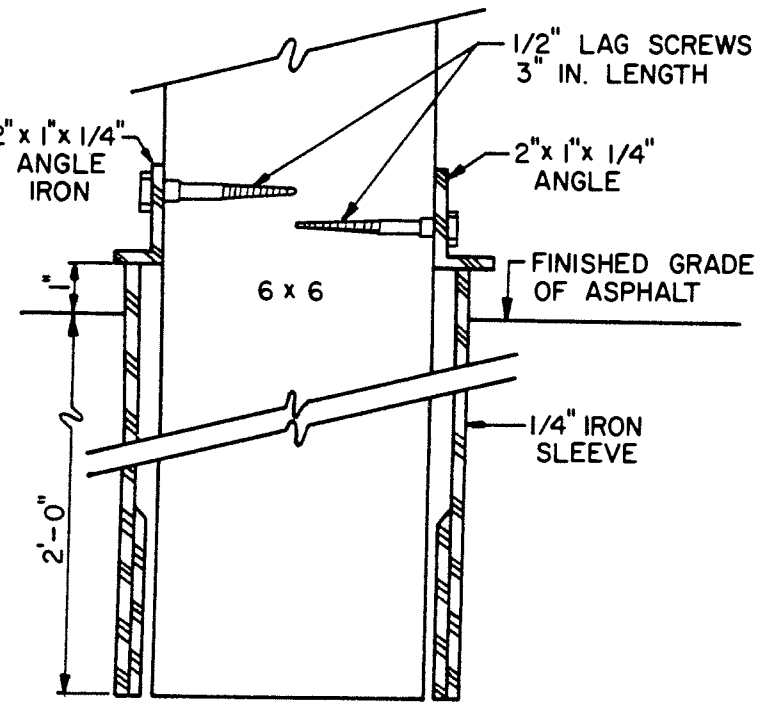
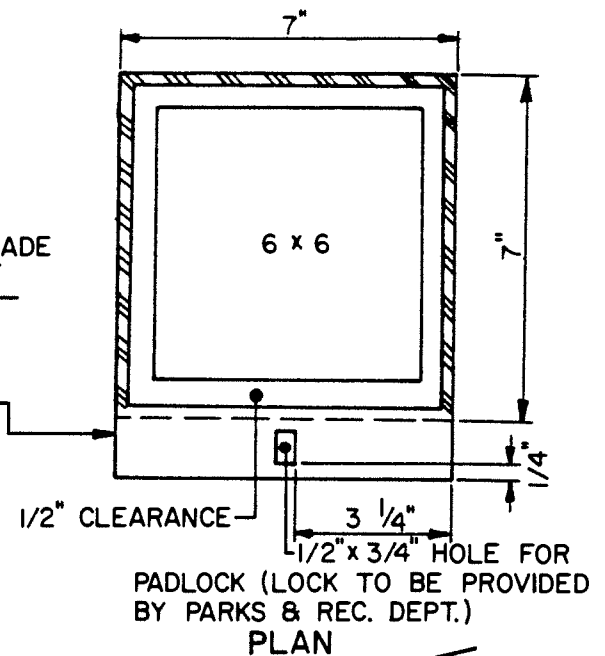


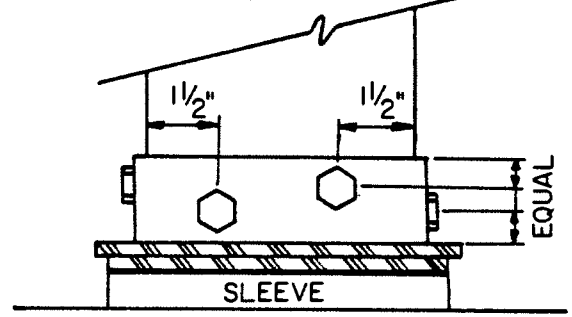
SECTION A-A



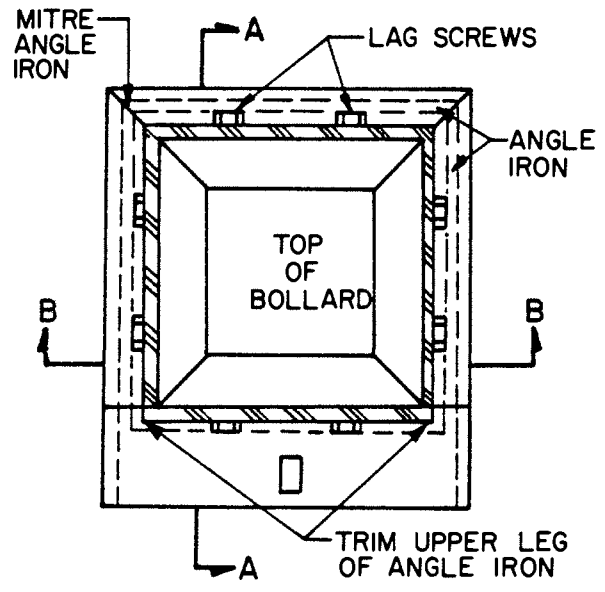
SECTION B-B



PLAN



ELEVATION



PLAN

APPROVED 1/26/88
DATE

Kent Huston
CITY ENGINEER

REVISED:

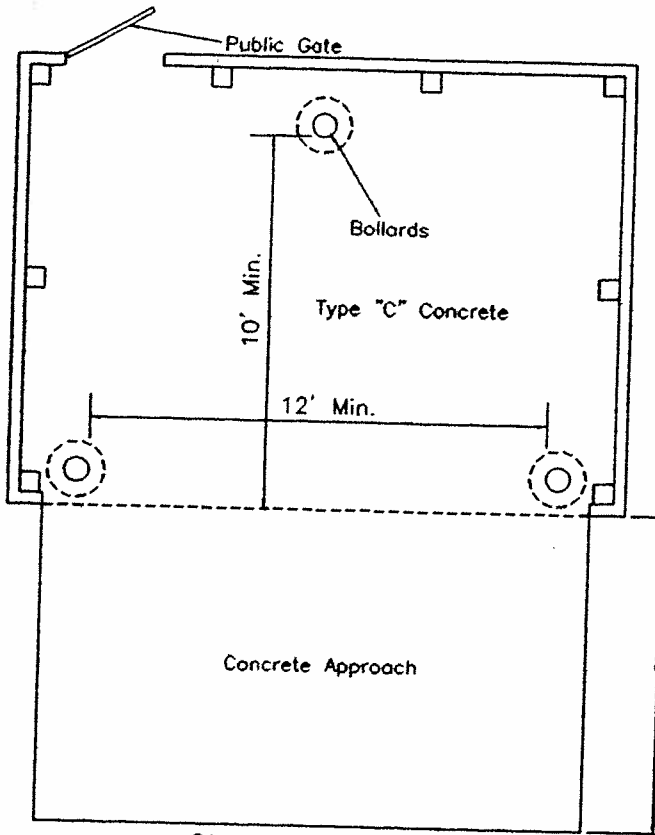
REMOVEABLE
BOLLARD
DETAIL

CITY OF LANCASTER, OHIO
DEPARTMENT OF ENGINEERING

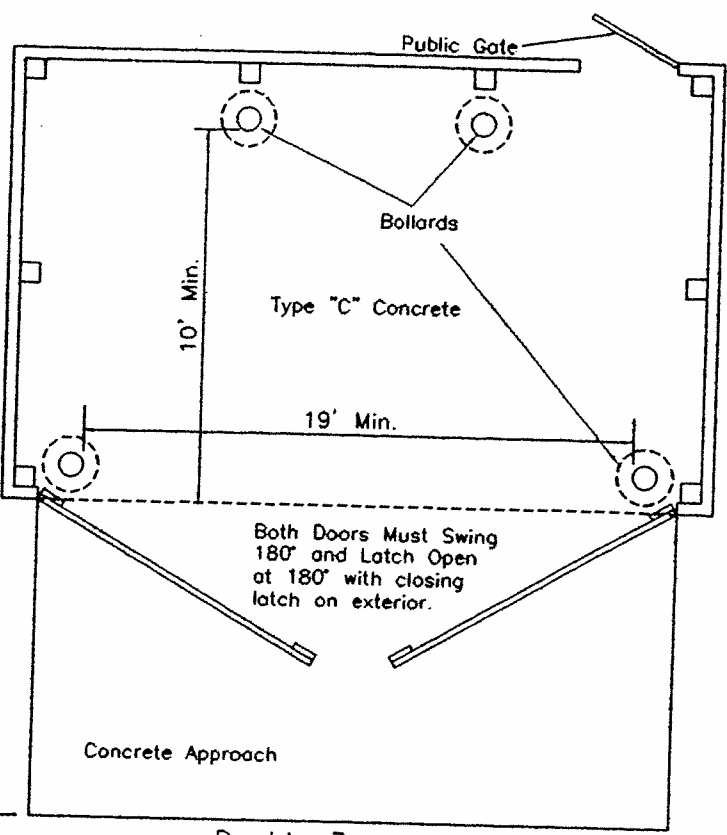
STANDARD
CONSTRUCTION DRAWING

DWG. BY: SLH
CHK'D BY:

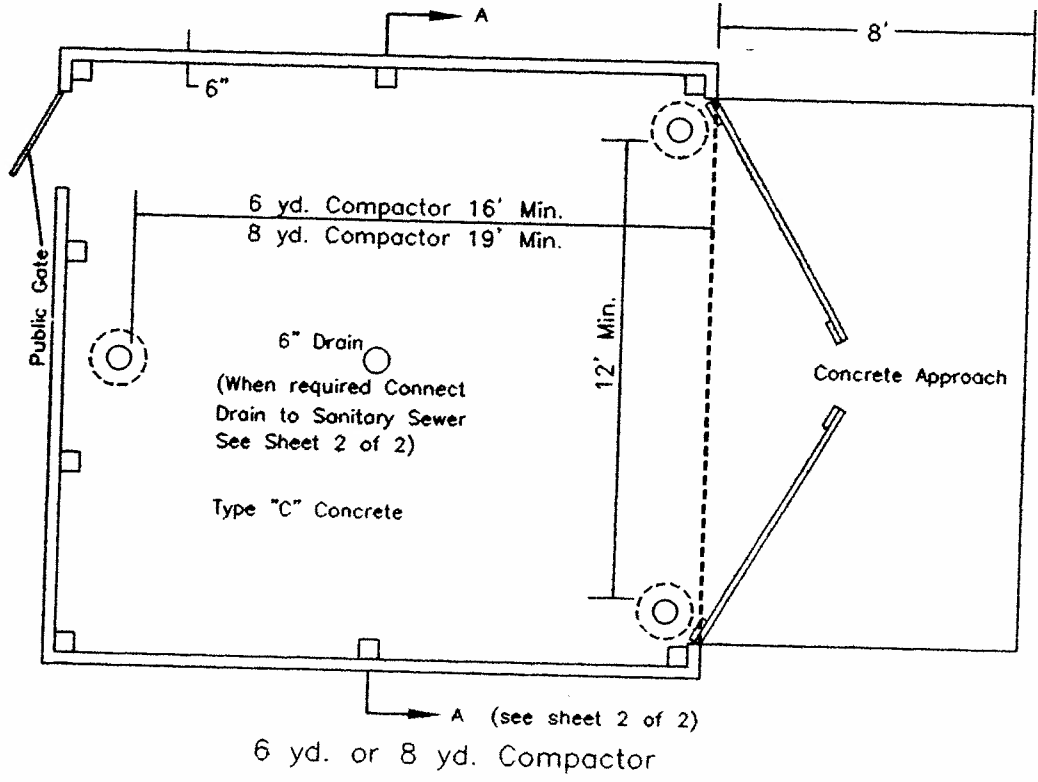
FILE NUMBER
M-3



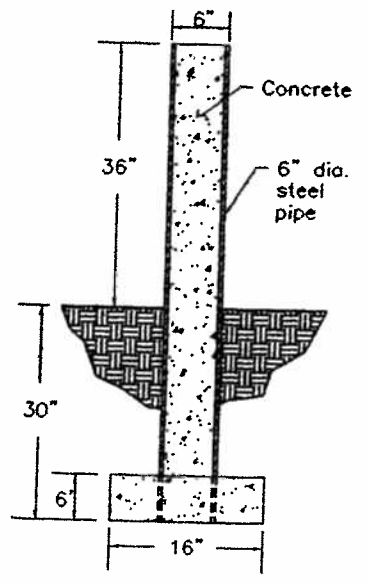
Single 3 or 4 yd.



Double 3 or 4 yd.



6 yd. or 8 yd. Compactor



BOLLARD DETAIL

APPROVED *Tom Johnson*
 12-22-97
 SUPERINTENDENT, DIVISION OF SANITATION
Paul Hutton
 CITY ENGINEER

REVISED: 12-22-97

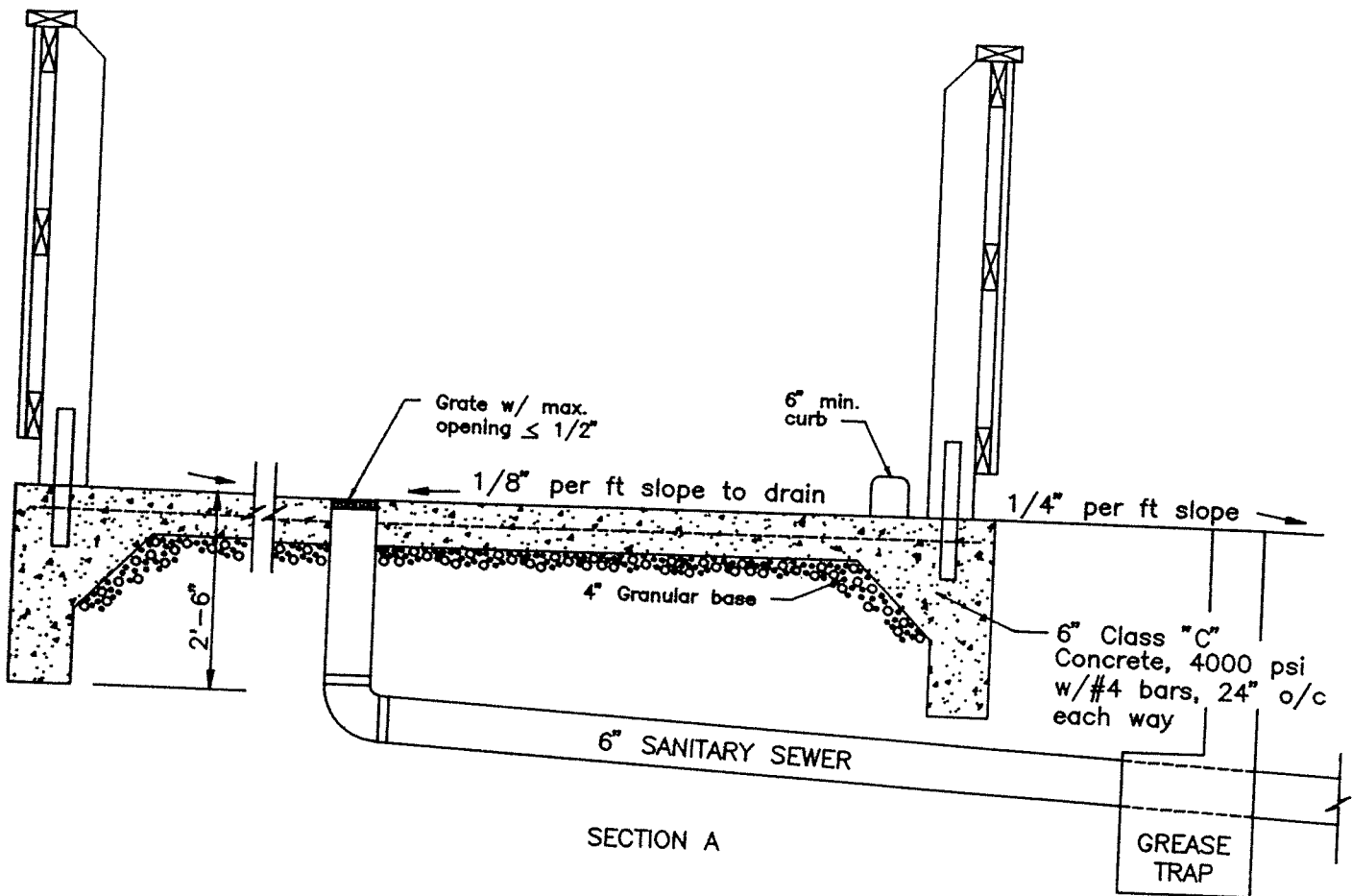
SPECIFICATIONS
 FOR
 DUMPSTER ENCLOSURE

CITY OF LANCASTER, OHIO
 DEPARTMENT OF ENGINEERING

STANDARD
 CONSTRUCTION DRAWING

DWG. BY: *CSW*
 CHK'D BY:

FILE NUMBER
 M-4 SHEET
 1 OF 2



SECTION A

GREASE TRAP

1. Doors shall open 180° to full-swing and shall be secureable in the open position. A latch shall be installed on the exterior of the doors to secure them in the closed position.
2. Concrete is required for enclosure floor and approach
3. Height and construction materials of walls are optional.
4. When an enclosure with doors is used, a public gate no less than 36 inches wide shall be installed on the enclosure.
5. Water hose connection shall be available in or near enclosure.
6. Where wood construction is used, inside walls shall be protected by a railing or curb to prevent damage.
7. A drain shall be placed in the center of enclosure when required by the Superintendent, Division of Sanitation. The drain and pad shall be constructed such that the drain does not act as an area drain and drains only the dumpster enclosure. The pad shall be elevated such that it is 6-inches higher than any point 10 feet of its edge and the ground shall slope away from the pad at a minimum slope of 1/4 inch per foot.

APPROVED

Richard Evener
SUPERINTENDENT, DIVISION OF SANITATION

Karl Huber
CITY ENGINEER

REVISED:

SPECIFICATIONS
FOR
DUMPSTER ENCLOSURE

CITY OF LANCASTER, OHIO
DEPARTMENT OF ENGINEERING

STANDARD
CONSTRUCTION DRAWING

DWG. BY:

CHK'D BY:

FILE NUMBER

M-4 SHEET
2 OF 2

City of Lancaster
Sanitation Department

743 S. Ewing Street
Lancaster, Ohio 43130
(614) 687-6660

Paul Martin

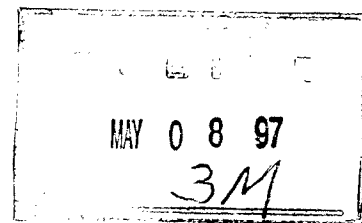
Superintendent

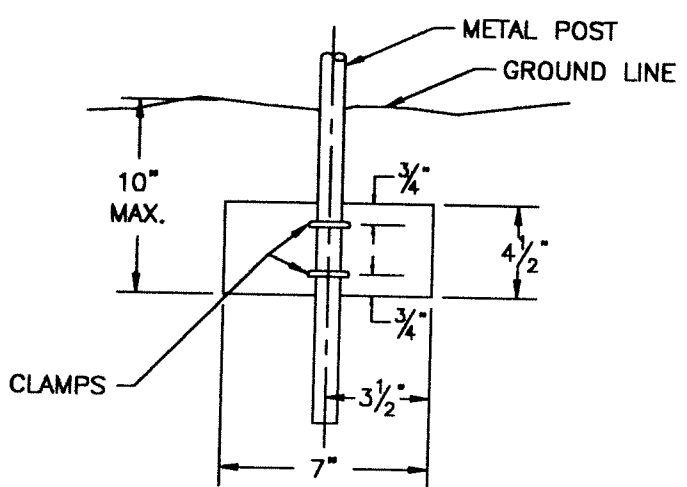
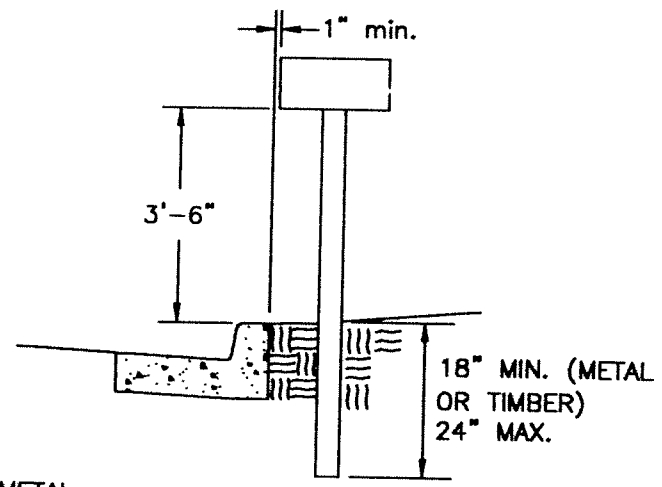
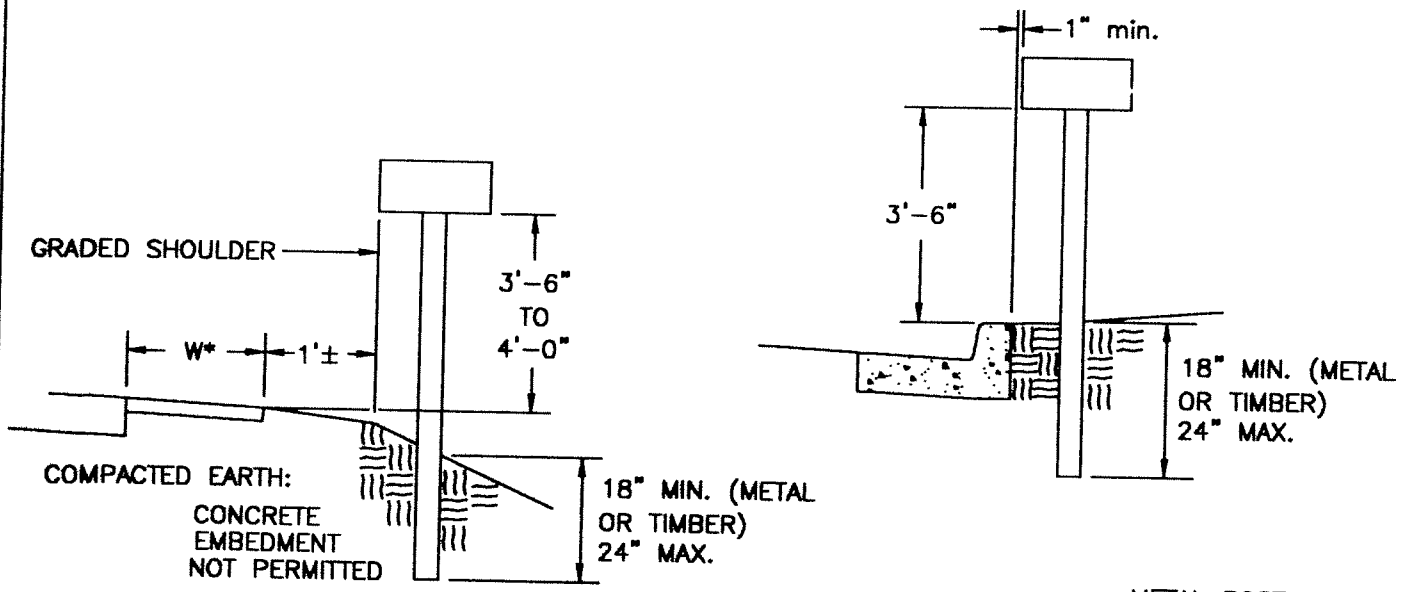
5/1/1997

CITY OF LANCASTER SANITATION DEPARTMENT
SPECIFICATIONS FOR DUMPSTER ENCLOSURE

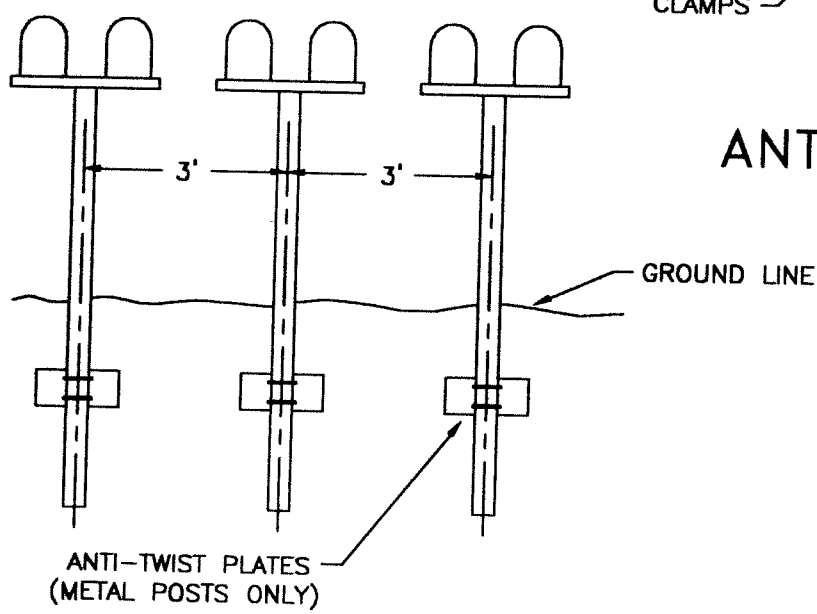
1. Doors shall open 180 degrees to full-swing and shall be securable in the open position. A latch shall be installed on the exterior of the doors to secure them in the closed position.
2. Concrete is required for enclosure floor and approach.
3. Height and construction materials of walls are optional.
4. When an enclosure with doors is used, a public gate no less than 36 inches wide shall be installed on the enclosure.
5. Water hose connection shall be available in or near enclosure.
6. Where wood construction is used, inside walls shall be protected by a railing or curb to prevent damage.
7. A drain shall be placed in the center of enclosure when required by the Superintendent, Division of Sanitation. The drain and pad shall be constructed such that the drain does not act as an area drain and drains only the dumpster enclosure. The pad shall be elevated such that it is 6-inches higher than any point within 10 feet of its edge and the ground shall slope away from the pad at a minimum slope of 1/4 inch per foot.
8. Dumpster drains within structures shall be plumbed to the Ohio Plumbing Code.

This applies to enclosure has a pad 6" high & slope 1/4" per foot





ANTI-TWIST PLATE



SEE SHEET 2 FOR
INSTALLATION POLICY

APPROVED 3-17-99
Karl Heston
CITY ENGINEER

**MAILBOX
INSTALLATION**

CITY OF LANCASTER, OHIO
DEPARTMENT OF ENGINEERING

STANDARD
CONSTRUCTION DRAWING


REVISED:

DWG. BY: *JAM*
CHK'D BY: *RM*
FILE NUMBER
M-5 SHEET
1 OF 2

MAILBOX INSTALLATION POLICY

All mailbox units, attachments, decaling, supports and installation thereof are to be in strict accordance with the United States Postal Regulations and in compliance with the following:

1. The mailbox unit shall be entirely of plastic and or lightweight galvanized steel construction. Newspaper delivery boxes shall be of the same type of construction and of minimum dimensions suitable for holding newspapers.
2. The mailbox unit to support attachment should be of sufficient strength to prevent the box from separating from the post top if struck by a vehicle.
3. The support structure (post) shall be of a breakaway nature; single 4-inch x 4-inch or 4 1/2-inch diameter wooden post; or a metal post with a strength no greater than a 2-inch diameter standard strength steel pipe (with a weight not in excess of 2.6 lbs. per foot) and embedded no more than 24 inches into the ground. A metal post shall not be fitted with an anchor plate, but it may have an anti-twist device that extends no more than 10 inches below the ground surface. Mailbox supports shall not be set in concrete.
4. Multiple mailbox units of more than two boxes may not be mounted on one support unless the support structure and mailbox arrangement have been shown to be safe by crash testing. However, lightweight newspaper boxes may be mounted below the mailbox on the side of the mailbox support.
5. The minimum spacing between the centers of supports (post) shall be three-feet between posts.
6. The unit shall be placed at an offset from the edge of the traveled way to insure that the roadside face of the mailbox is 12 inches outside the all-weather surface of the shoulder. When a mailbox is installed in the vicinity of the existing guardrail, it shall be placed behind the guardrail.
7. Any mailbox or mailbox installation deemed to be hazardous to traffic shall be removed from the public right-of-way.

APPROVED <u>3-17-99</u>  CITY ENGINEER	MAILBOX INSTALLATION	CITY OF LANCASTER, OHIO DEPARTMENT OF ENGINEERING
REVISED:		STANDARD CONSTRUCTION DRAWING
		DWG. BY: <u>AMT</u> FILE NUMBER CHK'D BY: <u>RM</u> M-5 SHEET 2 OF 2

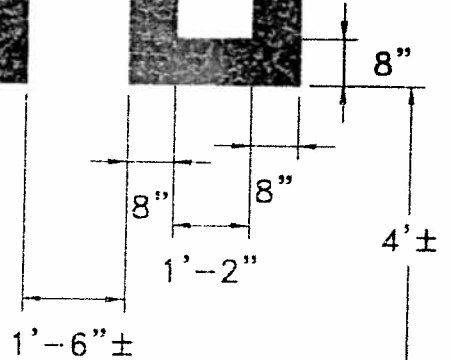
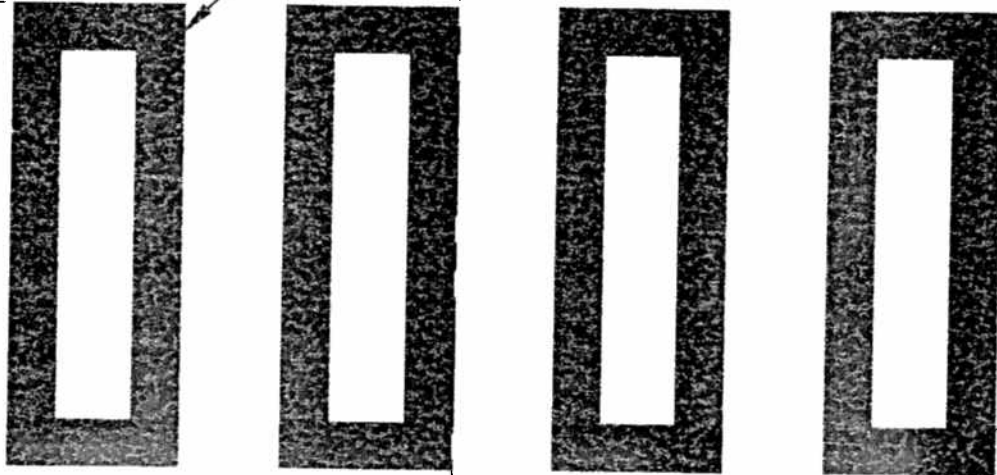
REPEAT TO CURB RAMP

CROSSWALK MARKINGS

REPEAT TO CURB RAMP

VARIABLES/INTERSECTION

Min. 10 FEET



1'-6" STOP BAR

PAVEMENT

NOTES:

1. Markings to be Thermoplastic in accordance with ODOT items 641 and 644.
2. Decorative Crosswalk to be used as directed by the Service Safety Director.

APPROVED 9/6/00

Kent Huston
CITY ENGINEER

REVISED:

DOWNTOWN
PEDESTRIAN
CROSSWALK
MARKINGS

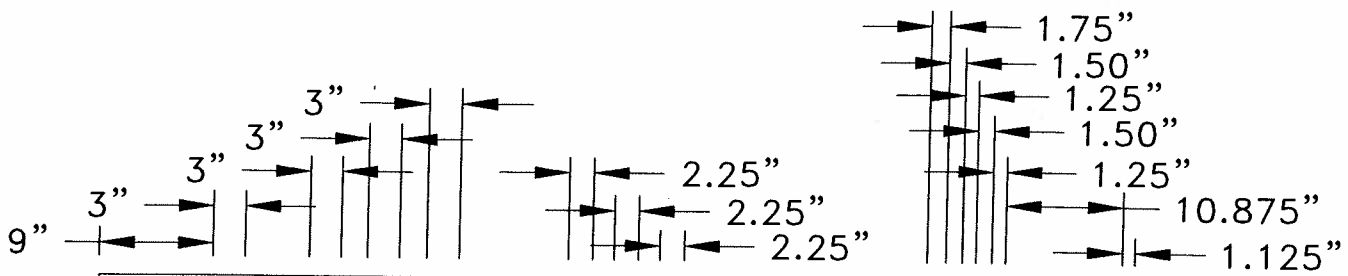
CITY OF LANCASTER, OHIO
DEPARTMENT OF ENGINEERING

STANDARD
CONSTRUCTION DRAWING

DWG. BY: ...DDK...
CHK'D BY: D.L.C...

FILE NUMBER

M-6



CITY OF LANCASTER, OHIO

DEPARTMENT OF ENGINEERING


Other Departments

Project Name

CONTRACTOR NAME

CONTRACTOR NAME

CONTRACTOR NAME



CONTRACT #

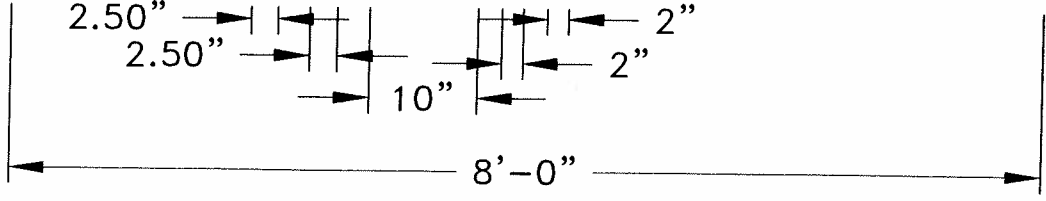
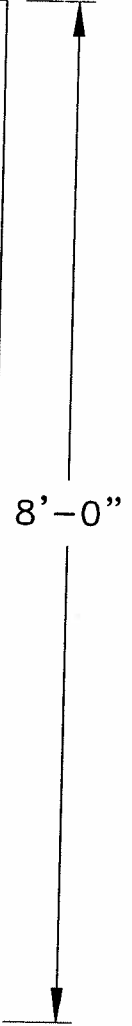
CONTRACT #

CONTRACT #

CONSULTANTS:

Consultant Name

Your _____ Dollars at Work



APPROVED 3-23-05

Kurt Heston
CITY ENGINEER

REVISED:

PROJECT IDENTIFICATION SIGN

CITY OF LANCASTER, OHIO
DEPARTMENT OF ENGINEERING

STANDARD CONSTRUCTION DRAWING

DWG. BY: DDK
CHK'D BY: D.H.C.

FILE NUMBER
M-7