

STANDARD BOLLARD - 6" x 6" x 6'-0" NO. 2 SOUTHERN YELLOW PINE. ALL TIMBERS ARE TO BE TREATED WITH AW.P.I. L.P. 22 (WOLMAN SALTS OR EQUAL) AND HAVE A RETENTION OF 40 P.S.F.

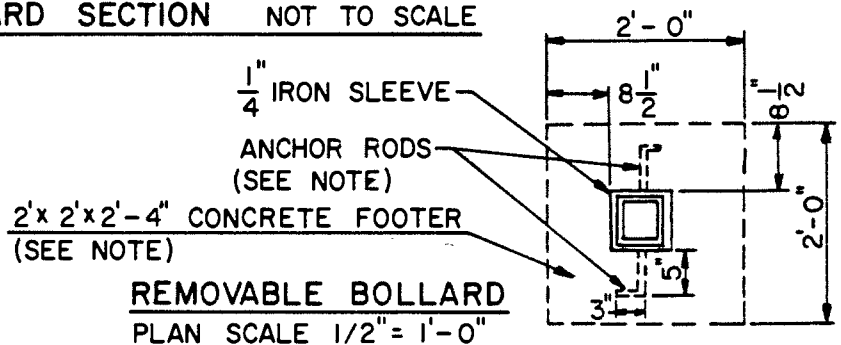
**NOTES:**

THE CONTRACTOR SHALL INSTALL THE EARTHEN BACKFILL IN 6" LIFTS AND TAKE CARE TO PLUMB EACH POST.

THE IRON SLEEVES, ANGLE IRON, AND ANCHOR RODS SHALL BE PAINTED WITH TWO COATS OF RUST-OLEUM NO. 769 DAMP-PROOF RED PRIMER OR EQUAL PRIOR TO INSTALLATION.

THE CONTRACTOR MAY SUBSTITUTE A 24" CIRCULAR FOOTER IN PLACE OF THE ONE SHOWN.

**BOLLARD SECTION NOT TO SCALE**



APPROVED 1/28/88  
DATE

*Kent Huston*  
CITY ENGINEER

REVISED:

BIKE PATH  
WOOD BOLLARD  
DETAIL

CITY OF LANCASTER, OHIO  
DEPARTMENT OF ENGINEERING

STANDARD  
CONSTRUCTION DRAWING

DWG. BY: SLH  
CHK'D BY: .....

FILE NUMBER  
M-2