

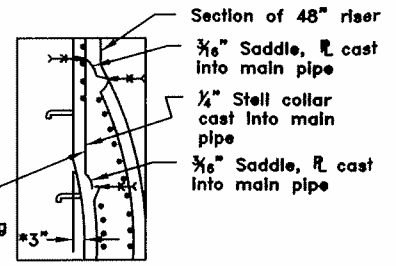
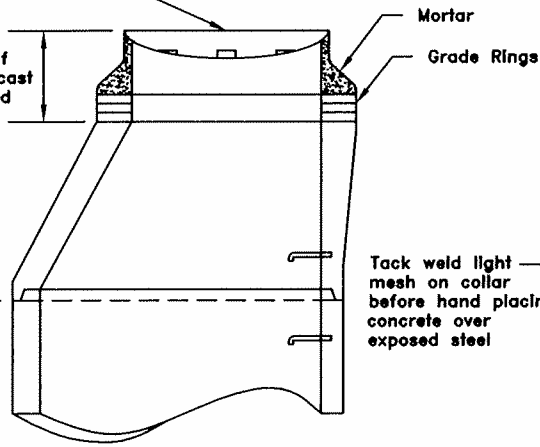
Casting Drawing, S-11 or S-12

Maximum of 18" from top of Manhole Cover to top of precast section unless otherwise noted

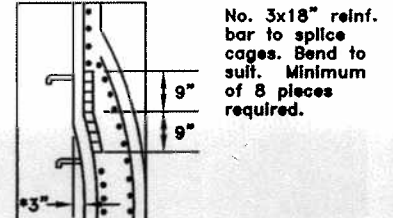
**Notes:**

Joints shall be as specified under 901.06

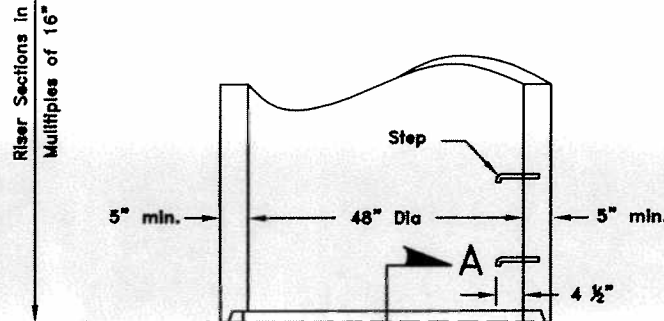
Backing may be Class "C" Concrete



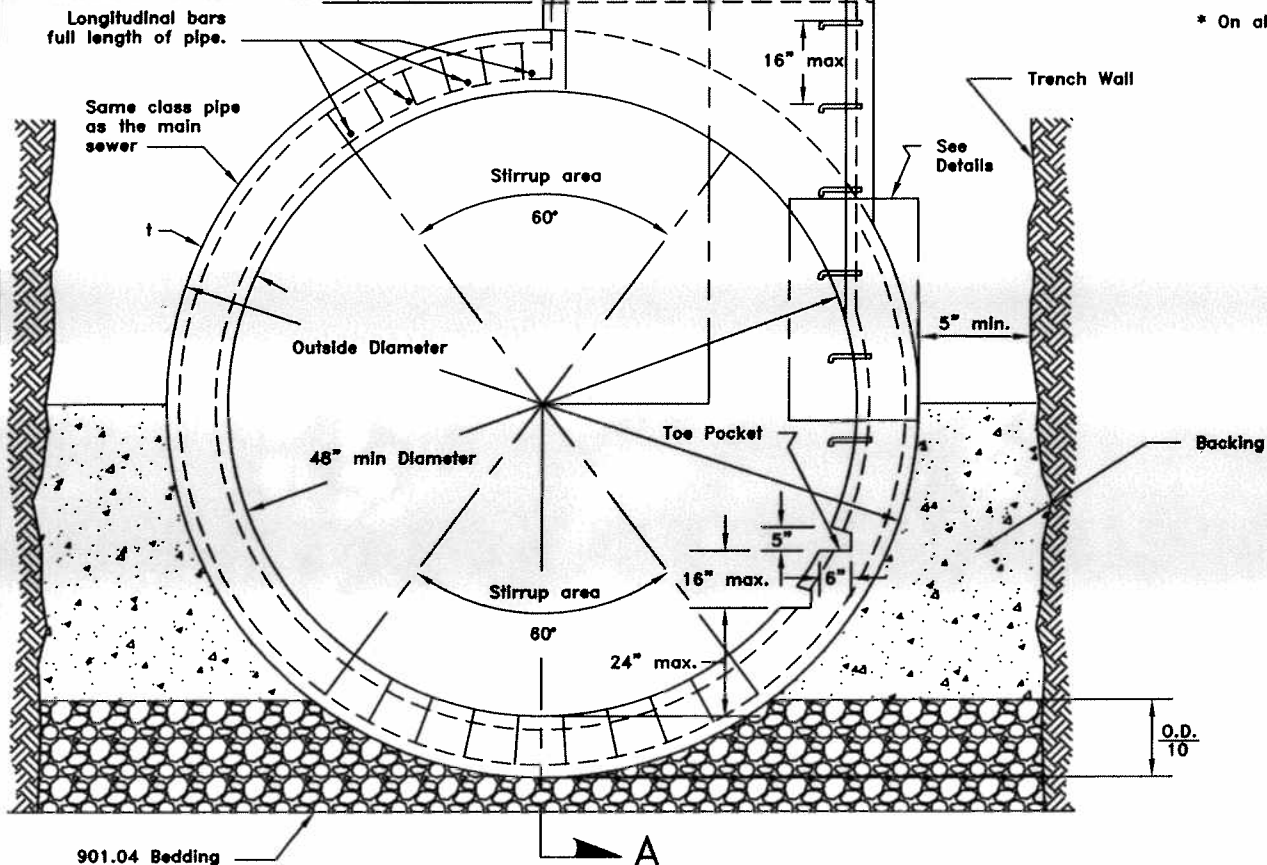
PLANT FABRICATED



INTEGRALLY CAST



\* On all sizes except 48"



APPROVED 6-27-07

*Brad Fagrell*  
CITY ENGINEER

TYPE "3" MANHOLE  
PRECAST BASE  
48" DIA & LARGER

CITY OF LANCASTER, OHIO  
DEPARTMENT OF ENGINEERING

STANDARD  
CONSTRUCTION DRAWING

REVISED: 21 JUN 07

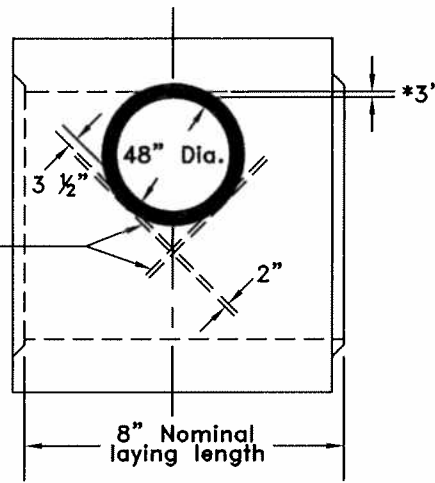
PREVIOUSLY 002A3

DWG. BY: BIC  
CHK'D BY: *DPK*

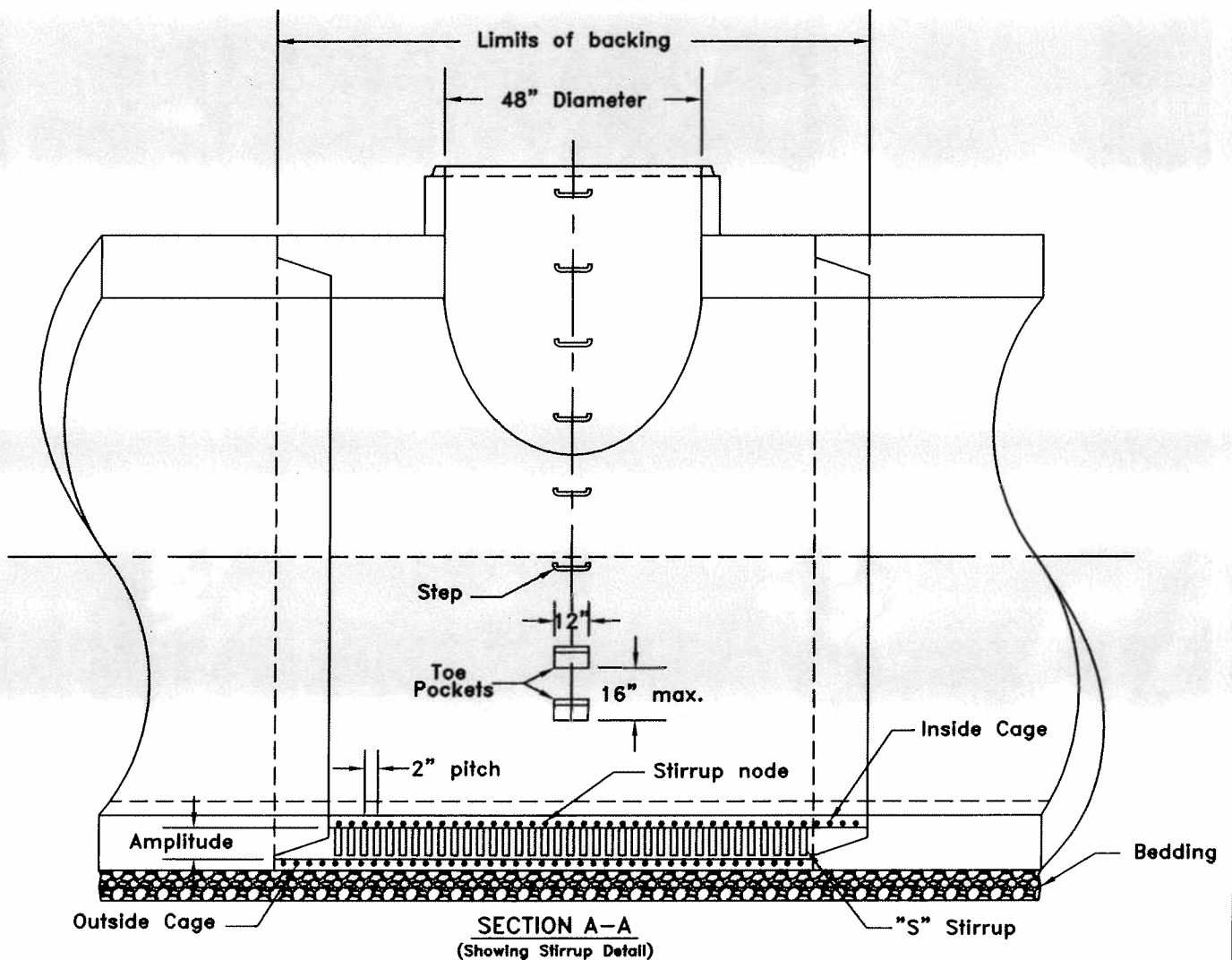
FILE NUMBER  
**S-8** 1 of 2

\* On all sizes except 48"

6'-0", 45° Diagonal reinforcing bars for 72" and larger only



PLAN VIEW



SECTION A-A  
(Showing Stirrup Detail)

APPROVED 6-27-07

*Brad Fagrell*  
CITY ENGINEER

REVISED: 21 JUN 07

TYPE "3" MANHOLE  
PRECAST BASE  
48" DIA & LARGER

CITY OF LANCASTER, OHIO  
DEPARTMENT OF ENGINEERING

STANDARD  
CONSTRUCTION DRAWING

DWG. BY: BIC  
CHK'D BY: *DPK*

FILE NUMBER  
**S-8** 2 of 2

PREVIOUSLY 002A3