

- NOTE A:** The inlet bottom shall be shaped to provide slope of 3" to 4" to outlet pipe. The cross sectional form of bottom and longitudinal slope is to be adapted to location of outlet pipe as directed.
- NOTE B:** Outlet pipe may be located in front or back and the outlet pipe shall be directed towards the center of the inlet.
- NOTE C:** The existing gutter within the area around the inlet where cut out, shall be replaced with class "C" Concrete or Asphaltic Concrete Paving as approved.
- NOTE D:** The backfilling within proposed paved areas shall be well tamped in layers not exceeding 4" in thickness loose measurement, or backfilled with an approved material.
- NOTE E:** The unit shall be precast concrete and the walls shall have a minimum thickness of 6 inches and be reinforced sufficiently to permit shipping and handling without damage. Solid 4"x8"x16" Block walls will only be allowed under special circumstances as determined by the City Engineer.
- NOTE F:** Place 4" curb drain stubs 30" below top of curb or as directed.
- NOTE G:** Allowable Pipesizes: 24" max. into front of inlet and 18" max. into sides of inlet. (12" min.)
- NOTE H:** Place MH steps such that they will not interfere with curb drain stubs.

APPROVED 7-31-98

Neat Huston
CITY ENGINEER

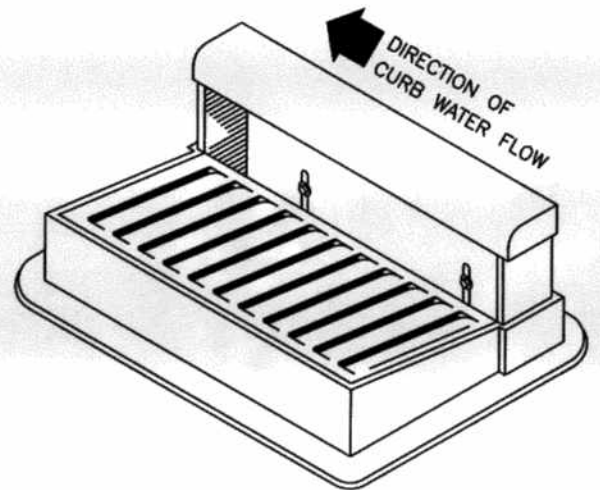
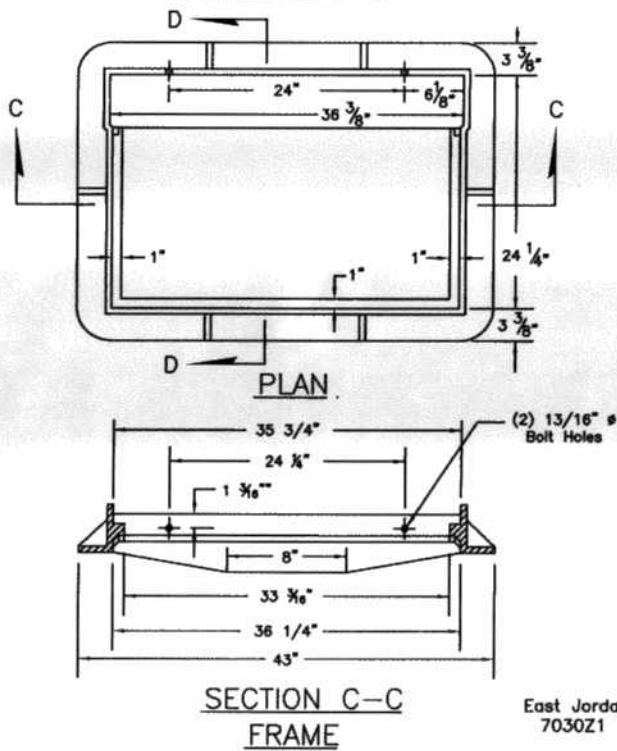
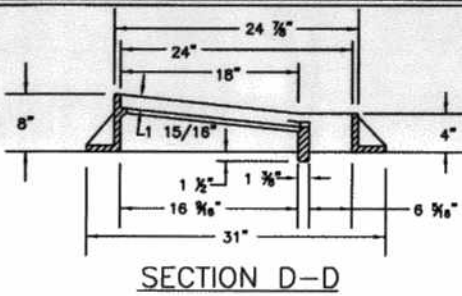
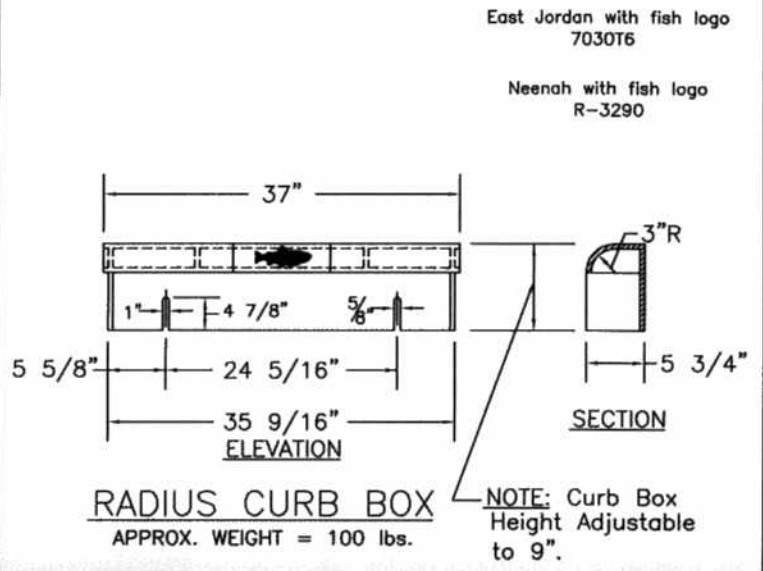
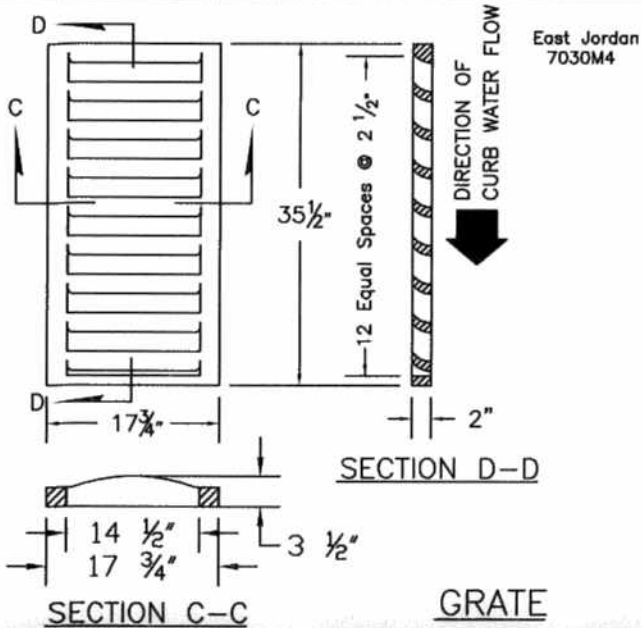
REVISED: 07-31-98

CURB AND GUTTER INLET

CITY OF LANCASTER, OHIO
DEPARTMENT OF ENGINEERING

STANDARD
CONSTRUCTION DRAWING

DWG. BY: *DOB* FILE NUMBER
CHK'D BY: *...* S-14 SHEET 1 OF 2



ISOMETRIC VIEW
FRAME, CURB BOX AND GRATE ASSEMBLY
APPROX. WEIGHT = 525 lbs.

APPROVED 6-27-07

Brad Fagrell
CITY ENGINEER

REVISED: 21 JUN 07

CAST IRON FRAME
AND GRATE FOR
CURB & GUTTER INLET
(STD. CURB)

CITY OF LANCASTER, OHIO
DEPARTMENT OF ENGINEERING

STANDARD
CONSTRUCTION DRAWING

DWG. BY: BIC
CHK'D BY: *DDK*

FILE NUMBER
S-14 SHEET
2 OF 2