

TEMPORARY ORDINANCE NO. 5-16

PERMANENT ORDINANCE NO. 10-16

AN ORDINANCE FOR CONFORMING BOUNDARIES OF CITY OF LANCASTER AND PLEASANT TOWNSHIP AND DECLARE AN EMERGENCY IN THE SHERIDAN DRIVE 1 ANNEXATION

WHEREAS, the City of Lancaster has annexed territory from Pleasant Township and wishes to have the boundaries of the township conform with the current City boundaries;

BE IT ORDAINED by the Council of the City of Lancaster, State of Ohio

SECTION 1. The City Law Director is directed on behalf of Council to present to the Board of County Commissioners of Fairfield County, a petition praying for such changes and extensions of the boundary lines of Pleasant Township as may be necessary to include those portions of other townships which have, by successive orders of the Board, been annexed to the City of Lancaster, and make the boundary lines of Pleasant Township co-extensive with the current corporate limits of the City of Lancaster as evidenced by the current map of the City boundary lines contiguous to Pleasant Township attached as Exhibit A.

SECTION 2. That a real and present Emergency exists and that this ordinance shall take effect and be in force from and after the earliest period allowed by law.

Passed: 3/28/16 after 3rd reading. Vote: Yeas 9 Nays 0

Approved: 3/29/16

Clerk: Teresa Lee Sandy

Offered by: David C. Cole

Second by: [Signature]

Requested by Law Committee

[Signature]  
President of Council

[Signature]  
Mayor

I, Teresa L. Sandy, Clerk of Council do hereby certify that on \_\_\_\_\_, 20\_\_\_\_ he Lancaster Eagle Gazette published the summary of this ordinance in accordance with Ohio Revised Code 731.24.

\_\_\_\_\_  
Clerk of Council

PLAT OF TERRITORY FOR ANNEXATION TO THE CITY OF LANCASTER 5.633 ACRES

PROPERTY OWNER	PARCEL NUMBER	ACREAGE
City of Lancaster	PN 027-01571.00	0.110 ACRES
City of Lancaster	PN 027-01572.00	0.109 ACRES
186 Anna Milton Trust	PN 027-00528.20	0.127 ACRES
Robert John Wright	PN 027-00528.10	0.350 ACRES
Samuel W. Smith & Associates, LLC	PN 027-01568.80	0.236 ACRES
City of Lancaster	PN 027-01540.83	0.145 ACRES
City of Lancaster	PN 027-00539.30	0.188 ACRES
Alma C. Hill and	PN 027-00539.00	0.201 ACRES
William Moore Trust	PN 027-00539.10	0.065 ACRES
William Moore Trust	PN 027-00539.20	0.176 ACRES
City of Lancaster	PN 027-00540.86	0.136 ACRES
City of Lancaster	PN 027-00540.90	0.100 ACRES
City of Lancaster	PN 027-00540.91	0.212 ACRES
City of Lancaster	PN 027-00521.00	0.241 ACRES
Franklin B. Smith	PN 027-00526.00	0.141 ACRES
Jim Smith and James Shaw	PN 027-00523.00	0.076 ACRES
Samuel W. Smith & Associates, LLC	PN 027-00525.00	0.375 ACRES
Robert W. A. Cheyette, L.P.	PN 027-00524.00	0.108 ACRES
Gary W. & Nancy B. Gatta	PN 027-00522.00	0.291 ACRES
Thomas H. Hildebrand, Trustee	PN 027-00526.00	0.019 ACRES
Thomas H. Hildebrand, Trustee	PN 027-00523.00	0.062 ACRES

\* Acreage of the parcels within the area to be Annexed

Shaded in the State of Ohio, County of Fairfield, Township of Pleasant, Range 15, Section 32, beginning at a point on the existing west right-of-way line (established in 1975) of Sheridan Drive, said point is located North 38 degrees 57'00" East a distance of 149.72 feet from the southeast corner of Lot 15 in the Three Years Addition as recorded in Plat Book 8, Page 16.

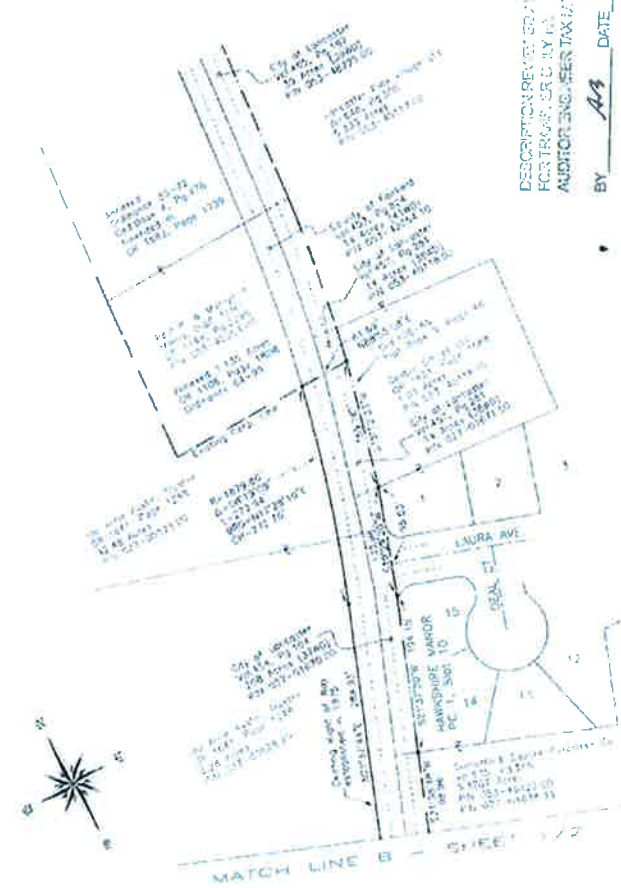
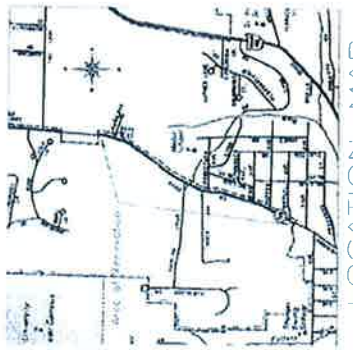
1. with the existing right-of-way line of Sheridan Drive the following eighteen (18) courses:

- South 18 degrees 00'00" East a distance of 100.00 feet to a point;
- with a curve to the right having a radius of 100.00 feet, a central angle of 06 degrees 14'22", an arc length of 21.61 feet and a chord bearing North 33 degrees 06'24" East a distance of 213.90 feet to a point;
- North 33 degrees 13'55" East a distance of 229.49 feet to a point;
- with a curve to the left having a radius of 724.64 feet, a central angle of 16 degrees 59'29", an arc length of 214.90 feet and a chord bearing North 30 degrees 42'11" East a distance of 109.16 feet to a point;
- North 18 degrees 30'39" East a distance of 109.16 feet to a point;
- with a curve to the right having a radius of 339.49 feet to a point;
- with a curve to the right having a radius of 664.67 feet to a point;
- North 02 degrees 46'54" West a distance of 41.57 feet to a point on the south line of Timber Lane;
- South 87 degrees 23'47" East a distance of 40.26 feet to a point on the north line of Timber Lane and on the City of Lancaster corporation line as recorded in Ordinance 56079 and Official Record 142, Page 21;
- with the City of Lancaster corporation line North 35 degrees 20'32" East a distance of 205.61 feet to a point;
- with the City of Lancaster corporation line North 33 degrees 13'55" East a distance of 115.20 feet to a point;
- with a curve to the right having a radius of 1463.39 feet, a central angle of 03 degrees 17'01", an arc length of 58.30 feet and a chord bearing North 33 degrees 07'13" East a distance of 58.30 feet to a point, said point being 30.00 feet left of P.T. Station 41+07.33 (1975 survey);
- North 33 degrees 07'14" East a distance of 209.61 feet to a point, said point being 30.00 feet left of P.C. Station 41+41.01;
- with a curve to the left having a radius of 3194.72 feet, a central angle of 12 degrees 10'00", an arc length of 804.74 feet and a chord bearing North 27 degrees 42'56" East a distance of 803.23 feet to a point, said point being 30.00 feet left of P.T. Station 41+07.33 (1975 survey);
- North 21 degrees 37'42" East a distance of 209.61 feet to a point, said point being 30.00 feet left of P.C. Station 41+41.01;
- with a curve to the left having a radius of 1479.46 feet, a central angle of 06 degrees 06'50", an arc length of 252.94 feet and a chord bearing North 12 degrees 25'06" East a distance of 252.94 feet to a point on the City of Lancaster corporation line as recorded in Plat Book 42, Page 109;
- with the City of Lancaster corporation line North 88 degrees 55'00" East a distance of 61.69 feet to a point;
- with the City of Lancaster corporation line as recorded in Ordinance 106-60 and Plat Book 3, Page 46, South 15 degrees 12'00" East a distance of 139.76 feet to a point, said point being the northwest corner of Lot 1 in Hawthorne Manor as recorded in Plat Chapter 1, Slide 10;
- thence continuing with the City of Lancaster corporation line South 19 degrees 29'20" West, passing the southeast corner of Laura Avenue at 95.03 feet, a total distance of 133.96 feet to a point;
- thence continuing with the City of Lancaster corporation line South 21 degrees 37'20" West a distance of 194.15 feet to a point; thence continuing with the City of Lancaster corporation line South 21 degrees 38'13" West a distance of 98.96 feet to a point, said point being 30.00 feet right of P.T. Station 55+52.14;
- with a curve to the right having a radius of 3869.33 feet, a central angle of 12 degrees 10'00", an arc length of 812.24 feet and a chord bearing South 27 degrees 42'56" West a distance of 819.95 feet to a point, said point being 30.00 feet right of P.C. Station 47+41.01;
- thence continuing with the City of Lancaster corporation line as recorded in Plat Book 8, Page 57 and Deed Book 3, Page 291, South 33 degrees 47'44" West a distance of 433.20 feet to a point, said point being 30.00 feet right of P.T. Station 43+07.83;
- thence continuing with the City of Lancaster corporation line and with a curve to the left having a radius of 1607.14 feet, a central angle of 13 degrees 17'24", an arc length of 372.78 feet and a chord bearing South 27 degrees 01'11" West a distance of 371.95 feet to a point on the north line of Granddaff Avenue;
- South 18 degrees 00'00" West a distance of 77.65 feet to a point on the west line of Lot 187 in the Halter Dardin Addition No. 2 as recorded in Plat Book 7, Page 46;
- thence continuing with the City of Lancaster corporation line South 17 degrees 35'04" West a distance of 902.02 feet to a point on the west line of Lot 175 in the Halter Dardin Addition No. 2;
- thence continuing with the City of Lancaster corporation line South 18 degrees 28'56" West a distance of 08.50 feet to a point as the southeast corner of Lot 175 in the Halter Dardin Addition No. 2;
- thence continuing with the City of Lancaster corporation line and with a curve to the right having a radius of 784.64 feet, a central angle of 26 degrees 44'25", an arc length of 472.31 feet and a chord bearing South 26 degrees 44'25" West, passing the easterly of Halter Avenue and an arc length of 418.68 feet, a total distance of 472.31 feet to a point;
- thence continuing with the City of Lancaster corporation line South 35 degrees 19'55" West a distance of 229.49 feet to a point on the west line of Lot 6 in The Charles L. Love Subdivision No. 2 as recorded in Plat Book 8, Page 43;
- thence continuing with the City of Lancaster corporation line and with a curve to the left having a radius of 1995.40 feet, a central angle of 06 degrees 14'22", an arc length of 207.50 feet and a chord bearing South 33 degrees 06'54" West a distance of 207.40 feet to a point on the west line of Lot 9 in The Charles L. Love Addition;
- thence continuing with the City of Lancaster corporation line South 28 degrees 59'50" West a distance of 103.59 feet to a point on the west line of Lot 9 in The Charles L. Love Addition;
- thence North 61 degrees 00'10" West a distance of 60.00 feet to the point of beginning, containing 5.633 acres

Beatings are based on a survey of 68.42 acres for annexation recorded in Official Record 1421, Page 7. Beating set are 5/8 inch by 3/8 inch and have a yellow plastic identification cap stamped "Tobin-McFarland". For additional information see plat of survey made in conjunction with and considered an integral part of this description.

DESCRIPTION REVISED AND APPROVED FOR TAXING PURPOSES BY FAIRFIELD COUNTY AUDITOR ENGINEER TAX MAPS

BY AA DATE 12/15/15



The territory to be annexed has a total perimeter boundary of 10,000 feet. The territory to be annexed is contiguous to the City of Lancaster's existing corporation line.

LEGEND:  
 - - - - Proposed Corporation Line  
 - - - - Existing Corporation Line  
 - - - - Property Line  
 ( ) Iron pipe (or other) found  
 o Angle point in description

NOTE:  
 The right-of-way for Sheridan Drive (shown) at the area being annexed was acquired by the County of Fairfield for a road improvement project in 1975. See the existing plans on file with the County Engineer for reference. Beatings are based on a survey of 56.412 acres for annexation recorded in Official Record 1421, Page 7.



361 Robert J. Tolson, 1244  
 Registered Surveyor No. 8416 Date  
**TOBIN - McFARLAND SURVEYING, INC.**  
 111 West Wheeling Street  
 Lancaster, Ohio 43130  
 Ph. 740-687-1710 Fax 740-687-0877

PLAT OF TERRITORY FOR ANNEXATION TO THE CITY OF LANCASTER 5.633 ACRES

TOBIN-MCFARLAND SURVEYING INC 111 West Wheeling Street Lancaster, Ohio 43130

PH 740-887-1700 Fax 740-887-0877

GRAPHIC SCALE: INCH = 100 FEET Date of Drawing: Oct. 14, 2008 Revised: June 27, 2015

Boundaries are based on a survey of 68.412 Acres for annexation recorded in Official Record 1421, Page 7;

LEGEND: Proposed Corporation Line, Existing Corporation Line, Property Line, Iron Pipe (or other) found, Angle point in description

STATE OF OHIO FAIRFIELD COUNTY PLEASANT TOWNSHIP TOWNSHIP 15, RANGE 18 SECTION 32

