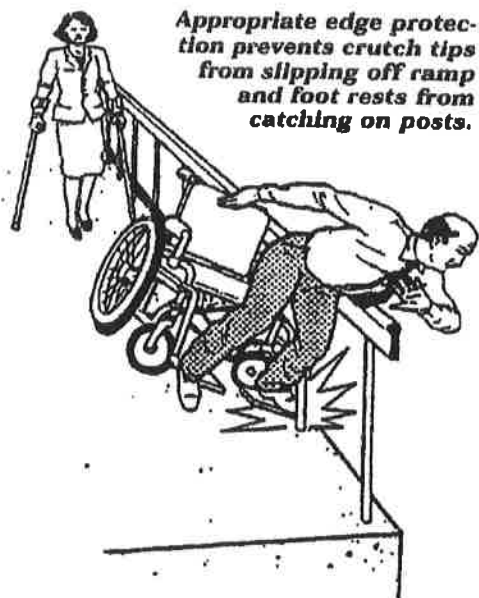


HANDICAP RAMP SPECIFICATIONS



Proper ramp design important for safety

By Marilyn Sydow, facilities planner, Ohio Rehabilitation Services Commission

Ramps provide a non-mechanical means of vertical access for people who use wheelchairs or other wheeled vehicles, and also may be used by pedestrians who have difficulty climbing steps. The Americans with Disabilities Act Accessibility Guidelines (ADAAG) defines a ramp as "a walking surface which has a running slope greater than 1:20."

Criteria have been established so that people who use wheelchairs do not become exhausted climbing a lengthy ramp or lose control while coming down. The ADAAG states that: the least possible slope be used for any ramp; a maximum slope of 1:12 (one foot of run for every inch of rise) is allowed for ramps in new construction; and a maximum rise for any ramp run is 30".

If the entire length of the ramp exceeds 30 feet (or 40 feet, depending on slope), intermittent landings must be included in the ramp run to provide level resting areas. These landings are in addition to prescribed landings at the bottom and top of each run.

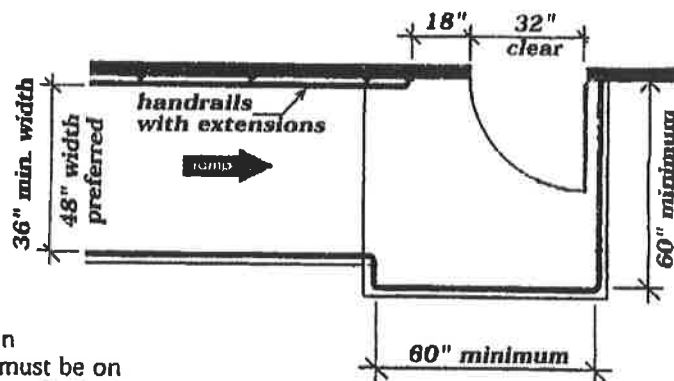
All landings must be a minimum 60" in length. If ramps change direction at landings, the minimum landing size must 60"x60". If a doorway is located at a landing, sufficient maneuvering clearances must be provided at the front and latch side of the door. (See drawing at right.)

The ramp run itself must have a minimum clear width of 36". This

width works well for residential ramps, but commercial ramps should be made wider, at least 48" or 60" wide, to accommodate two-way traffic.

Handrails are required if a ramp has a rise greater than 6", or a horizontal projection greater than 72". These handrails must be on both sides of the ramp with the inside rail continuous on "dogleg" or switchback ramps. The top of the handrail gripping surface must be mounted between 34" to 38" above the ramp surface and the handrails must be 1 1/4" to 1 1/2" in diameter with a clear space of 1 1/2" between the handrail and the wall. Handrails must provide a continuous gripping surface and not rotate in their fittings. They must extend at least 12" beyond the top and bottom of the ramp segment, be parallel with floor or ground, and have ends rounded and returned smoothly to the floor, wall or post.

Ramps without appropriate edge protection are hazards for wheelchair, crutch and cane users. (See drawing top left.) Edge protection is required on ramps and landings with drop-offs. A minimum 2" high curb, wall, railing or projecting surface must be installed to prevent people from slipping off the ramp or to keep an extended leg from jamming against the upright posts. A slight cross slope on ramps and landings can prevent puddling and facili-

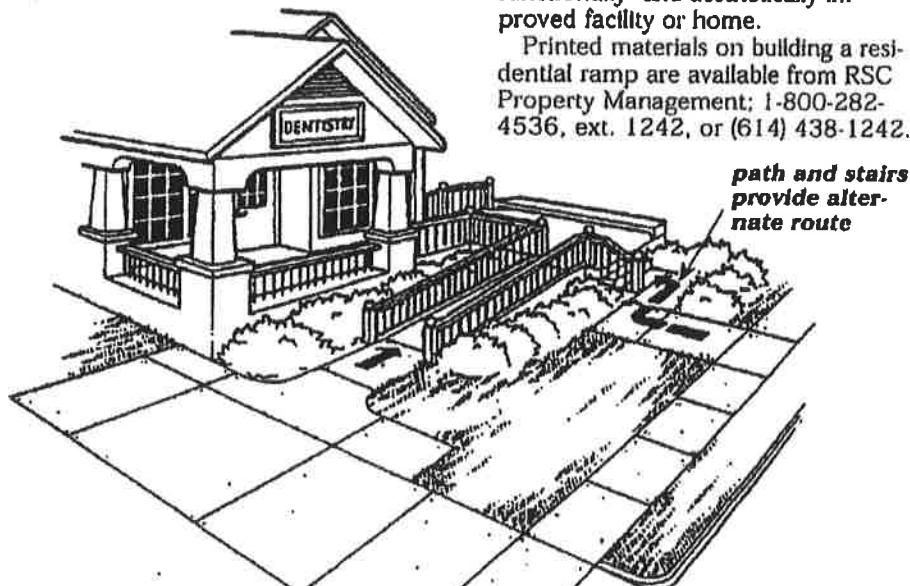


tates drying of surfaces after a rain. However, the cross slope of ramp surfaces must be no greater than 1:50.

Ramps for individual residences do not need to comply with the ADAAG. However, it is still a good idea to follow most, if not all, of the requirements for safety. Since most residential ramps are constructed of wood, which can be slick in wet weather, it is a good idea to apply a skid-resistant finish to the ramp surface. Most commercial ramps are constructed of concrete and/or brick and have surfaces that are inherently durable and skid-resistant.

Ramps for home or commercial use should be designed and built so that their location and construction materials are well-integrated with the site and the building. For example, a residential ramp would have materials chosen to be compatible with the style of the house and be painted or stained to match. The result of proper landscaping and coordination of ramp design with other elements of the site is a functionally- and aesthetically-improved facility or home.

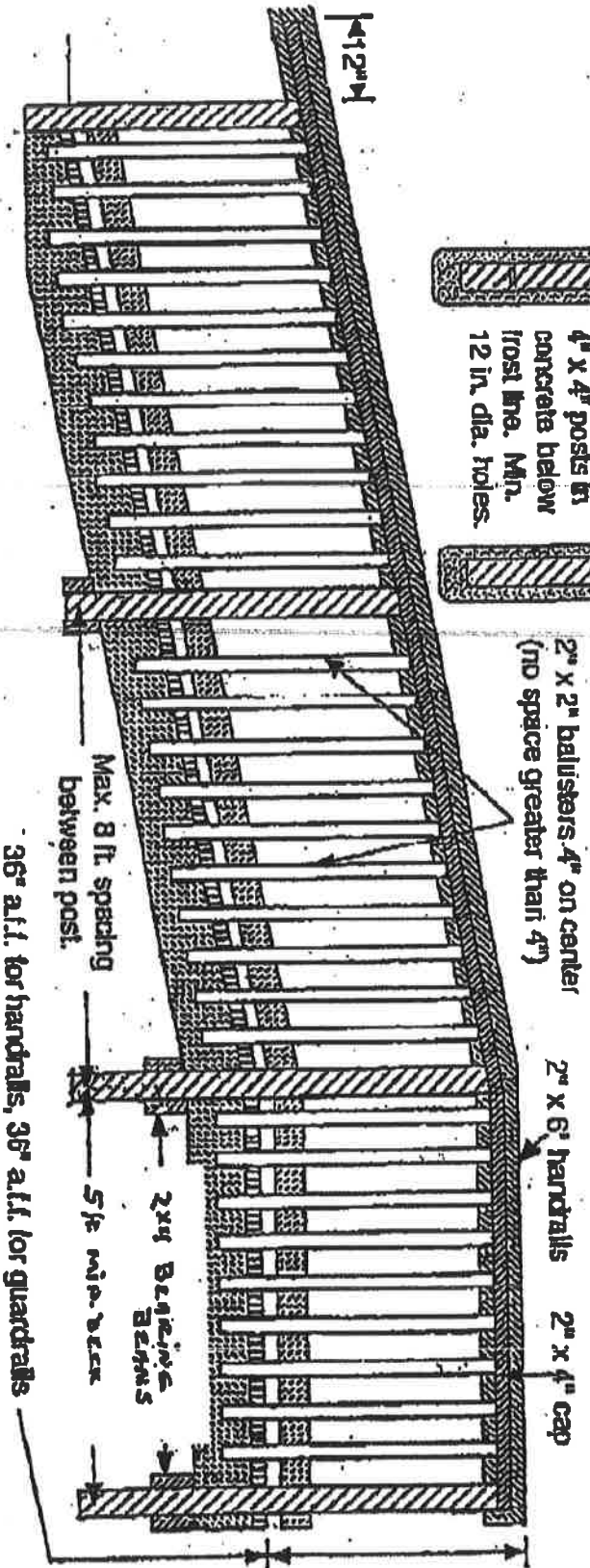
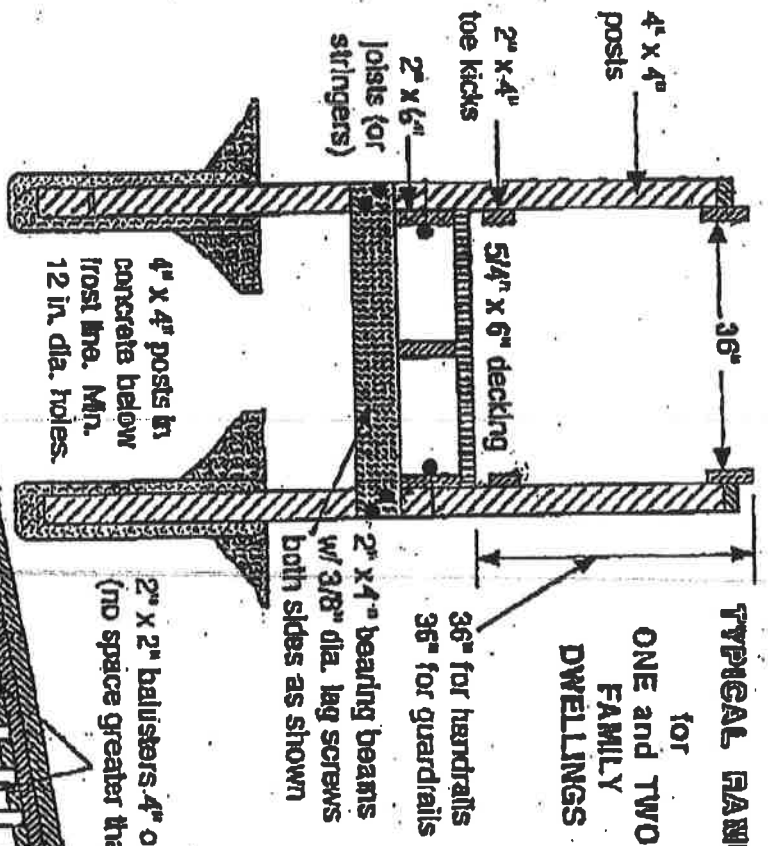
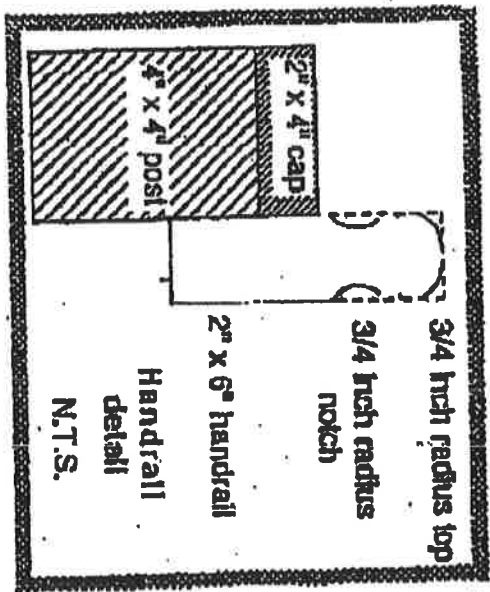
Printed materials on building a residential ramp are available from RSC Property Management; 1-800-282-4536, ext. 1242, or (614) 438-1242.



An example of a ramp integrated into landscaping and other site features.

TYPICAL RAMP for PERSONS WITH DISABILITIES

for
**ONE and TWO
FAMILY
DWELLINGS**



1/2 RATIO

80